



THE INCLINE LODGE

OUR HOTEL FACILITIES

- ✓ Mountain Modern Rooms
 - ✓ Swimming Pool
 - ✓ Event Packages
 - ✓ Contactless Stay
 - ✓ Après Lounge & Bar
 - ✓ Local Partnerships
-

CONTACT US



(775) 260-5750



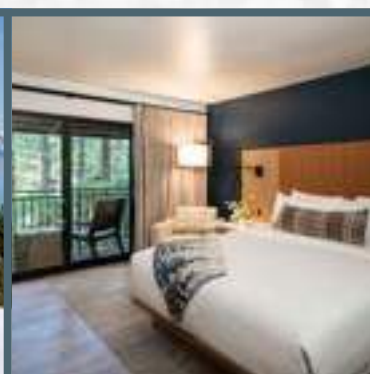
www.theincline lodge.com



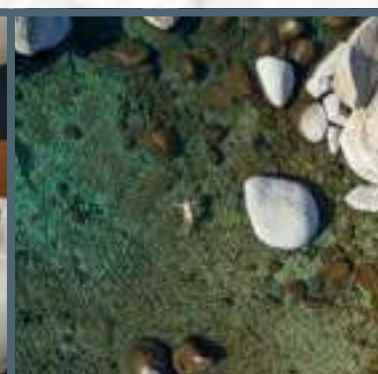
*APRES LOUNGE
& BAR*



*DIAMOND PEAK
SKI RESORT*



*MOUNTAIN
MODERN ROOMS*



*LAKE TAHOE
RELAXATION*

• ABOUT US

As North Lake Tahoe's only newly renovated, boutique hotel, we provide transformational experiences for explorers, vacationers, workcationers, and business travelers alike.

• MORE FACILITIES & AMENITIES

- Indoor Swimming Pool
- Discount Ski Tickets
- Complimentary Ski Lockers
- Complimentary Parking
- AC in all Rooms
- Free Commercial-Grade Fiber Wifi
- Artisanal Coffee & Teas
- EV Chargers
- Daily Complimentary Wine Reception

CONTACT US

(775) 260-5750
Groups@theincline lodge.com

Après Lounge & Bar

PACKAGES & PRICING LIST

ESTD  2023

The Après Lounge & Bar at the Incline Lodge is our cozy downstairs speakeasy style lounge that is available to rent for events and parties!



Standard

BASIC PRICING LIST

House Red, White, and Sparkling Wines. Select Domestic & Imported Beer Selection. Liquor available for separate purchase.

\$25/Person

Premium

POPULAR PRICING LIST

Full Domestic & Imported Beer Selection. Full Wine Selection. Signature Cocktail and Liquor Selections included in package

\$55/Person

Individual

INDIVIDUAL PRICING LIST

Guests pay individually for drinks or via one card at the end of the evening. 10% off all drinks will be applied

Individual Cards

Full Bar pricing is per person for each guest over the age of 21. Bar service is unlimited and continuous. 20% service charge on all beverage packages / no tax

BAR MENU

FEATURED COCKTAILS

Original Old Fashioned

Tom Collins

Mountain Margarita

Espresso Martini

Lemondrop Martini

Empress in Red

Cosmopolitan

Negroni

CRAFT BEERS

West Coast Hazy IPA

Atomic Duck IPA

Winter Ales

Selection of Alibi Brews

Selection of FiftyFifty Brews

Brewdog - Lager

Truckee Blonde Ale

El Sully Cerveza

Watermelon Wheat

Blood Orange IPA

WINES

Alexander Valley Rose

Orin Swift Blend

Purple Hands Pinot Noir

Mullan Road Cabernet

Poema Sparkling Cava

House - Chateau Souverain Collection

Metier Collection

Melville Chardonnay & Syrah

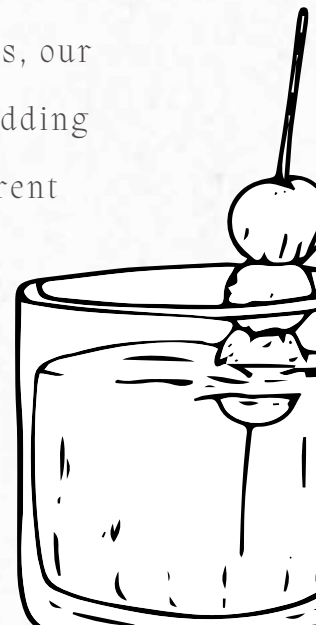
Resonance Chardonnay

Whitehall Lane Collection

Experience our full-service bar offering a curated selection of beers, wines, and craft cocktails. Perfect for intimate gatherings or celebrations, our space can host up to 50 guests and is ideal for group events or wedding parties. Contact us directly for more information about our current offerings and event options!

1003 Tahoe Blvd Incline Village NV 89451

Menu is subject to change





Après Lounge & Bar Rental Sheet

ROOMS + THE LOUNGE

Discounted room rates, VIP treatment, nightly wine reception, and lounge rental prices as low as \$250/hour.

HOURLY LOUNGE RENTALS

\$500/hour, preferred catering list, in-house wine, beer, and cocktail list available, audio visual capabilities.

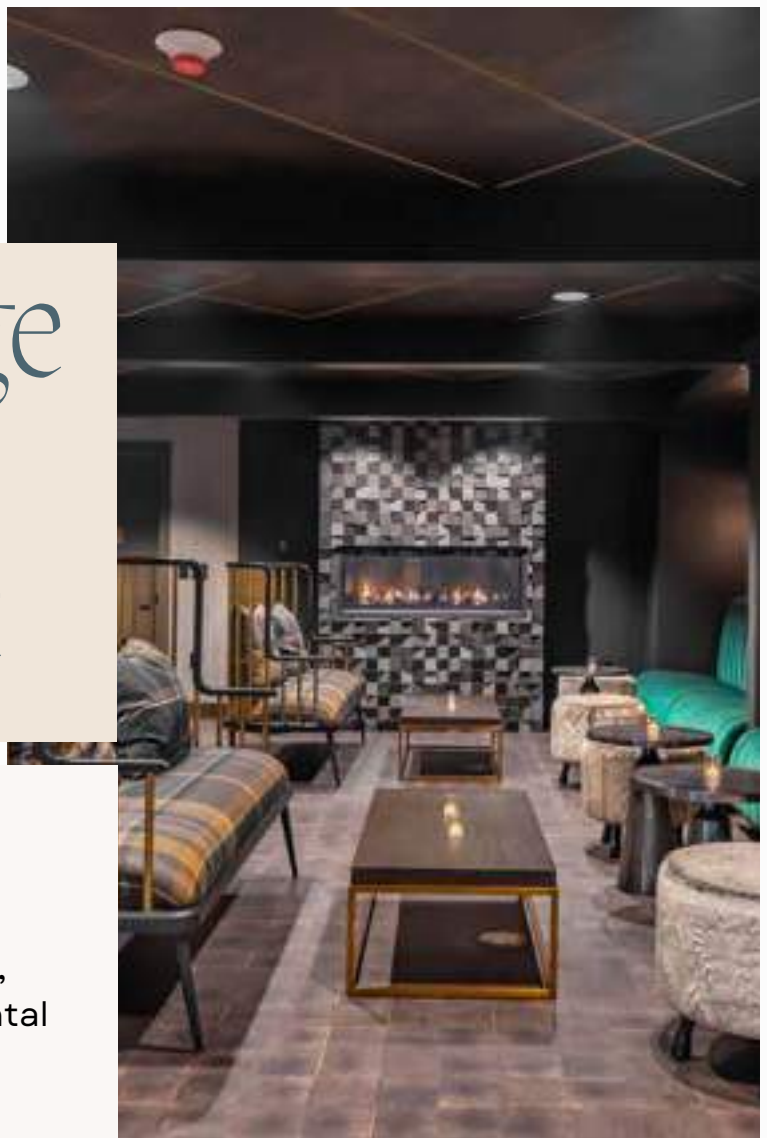
HALF/FULL DAY RENTALS

Half Day - \$1500 - up to four hours

Full Day - \$2500 - up to eight hours

DISCOUNTS

Local, non-profit, and corporate discounts are available.



Host Your Next Event at The
Incline Lodge!

The Après Lounge & Bar is ideal
for cocktail parties, wedding
receptions, corporate events, and
more!

Reach out for more details and
let us help make your event
unforgettable!

 (775) 260-5750

 1003 Tahoe Blvd. Incline Village

 www.theincline lodge.com

 Groups@theincline lodge.com

Preferred Caterers

OUR TRUSTED VENDORS



#1 Wild Erb Catering

Full service catering located locally here in Incline Village specializing in passed or plated appetizers!

Contact Information

Phone: 951-473-0592

Email: wildechristine@yahoo.com

Website: www.wilderb.net

Main Contact: Christine Wilde, Owner

#2 EATS Catering

Full service catering company with traveling kitchen for all your wedding, party, and event needs! Based in Truckee, CA, EATS Cooking Co is a premier partner with the Incline Lodge and can cater to all of your event or wedding needs!

Contact Information

Phone: 530-414-3368

Email: info@eatscookingco.com

Website: www.eatscookingco.com

Main Contact: Tommy Adkins, Owner

#3 Sunshine Deli

Sunshine Deli & Catering is a specialty food café & catering company in Incline Village. Great option for buffet breakfast and boxed lunches at the Incline Lodge!

Contact Information

Phone: 775-832-2253

Website: www.sunshinedeli.com

#4 Happy Tiers

Happy Tiers Bakery is a locally owned bakery and catering company that specializes in baked goods and delicious breakfast options! Happy Tiers is a premier partner for the Incline Lodge supplying us with our baked breakfast sandwiches and goods every week!

Contact Information

Phone: 775-600-5416

Email: info@happytiersbakery.com

Website: www.happytiersbakery.com

In the event that you opt to engage an external caterer not included in our preferred list, please be advised that a \$500.00 service fee will be applied.

This fee is designed to offset our internal costs associated with accommodating an unfamiliar caterer. It encompasses the expenses involved in conducting a site walkthrough, coordinating logistics, and ensuring a seamless event experience. This fee is necessary to maintain the high standards of service and excellence that our clients have come to expect from the Incline Lodge.

All vendors must be licesed professionals and approved by the Team @ The Incline Lodge.



REVERIE PICNICS & EVENTS

Event Planning & Coordination

For all of your event planning needs at the Incline Lodge! Reverie Picnics & Events has extensive knowledge of our property capabilities and would be delighted to help assist in planning your event here in Tahoe or at the Incline Lodge.



Tablescape Package \$45/person

- Custom tablescape and moodboard via Zoom or phone call
- Set up, table-runners, dinner & salad plates, 3-piece cutlery set, your choice of 2 glasses/person
- Fresh flower arrangements, cloth napkins, candle holders & candles,
- Charcuterie appetizer and complete clean up

Anniversary & Honeymoon Package From \$300

- Dessert charcuterie board
- Disposable plates/champagne glasses - (alcohol provided by the Incline Lodge)
- Rose petals
- Floral arrangement
- Delivery / Setup

Upgraded Lounge Area From \$700

- 4 Large Floral Arrangements
- 4 lounge table centerpiece decor: including rentals such as: candles, candleholders, speciality
- glassware and Easel
- Bar top sign with small florals
- Welcome sign



The Total Package From \$4,000



- Venue visit, vendor recommendations, unlimited communication, custom tablescapes and mood boards, design consultations
- All tablescape package items included, contract review, vendor management, rehearsal coordination, timeline management
- Processional, recessional, final details binder, rehearsal walkthrough with wedding party, finalization and cleanup of all Reverie inventory
- Please reach out directly for more information on packages and availability!



Enquire today via our website!

@reveriepicnics | www.reveriepicnics.com | reveriepicnics@gmail.com



Frequently Asked Questions FAQs

The Incline Lodge and our dedicated team members are here to ensure that you have a memorable experience in Lake Tahoe. Please let us know if there is anything we can do to make your stay unforgettable!

- **Are room nights required to rent the lounge?**
 - The lounge can be booked with or without room nights. Discounts on the lounge rental are available with a room block at the hotel.
- **What is the deposit structure for room blocks?**
 - No deposit is required for room blocks between October 1st and April 30th. For other dates, the deposit amount will vary based on factors such as the event date, cutoff date, block size, and feasibility. These details will be finalized during the contracting process.
- **What is the cancelation policy?**
 - Reservations become nonrefundable after the cutoff date, which varies by season and is set at 45, 60, or 90 days as specified in your contract. Cancellations made before the cutoff date will not incur any fees.
- **What are automated payments?**
 - When guests book through their direct booking link, payment will be processed 45 days prior to arrival.
- **What information should we share with our guests regarding their rooms?**
 - Cancellation policy, payment schedule, and the reservation extension process which will all be included in the contracting process.
- **Transportation Recommendations?**
 - TART CONNECT is a great local option here in Incline Village. Free shuttle paid for by the town. Please check online for timing and more information at tahoetruckeetransit.com. Uber/Lyft are also available but can be expensive.
- **How close is the Incline Lodge to Lake Tahoe?**
 - We are 0.6 miles away from the lake and well within walking distance!
- **What elevation is the Incline Lodge at?**
 - The hotel is located at 6,350 ft above sea level.
- **Does the hotel have an elevator?**
 - Our property does not have an elevator so if you would like to be placed on the first floor please let us know in your reservation notes.
- **Does the Incline Lodge require event liability / cancelation insurance? - Yes**
 - **Liability Insurance:** Event liability insurance can help protect you from financial loss if you are held legally responsible for property damage to the venue/hotel or bodily injury to someone injured at your event.
 - **Cancelation Insurance:** Event cancellation coverage can help reimburse you for non-refundable deposits and expenses if you must cancel your event due to unforeseen circumstances (extreme weather, injury, illness, or vendor-related issues, etc).
 - For more information please read the Wedding / Event Insurance page.

Have any questions? Reach out directly to ty@theincline lodge.com

Frequently Asked Questions FAQs

- **Apres Lounge & Bar occupancy limit?**
 - The occupancy for the lounge is set at 50 people by Washoe County Building Dept
- **Hours of operation for parties & afterparties?**
 - Lounge reservation timeframes are handled on a case-by-case basis depending on event type, size, room block, vendors, etc. Please confirm your event timeframe with Hotel Management at least 30 days in advance.
- **Is live music allowed in the lounge?**
 - Yes live music is permitted in the lounge until 10 PM. Music levels must remain acceptable for all other hotel guests at the Incline Lodge.
- **Does the Incline Lodge allow outside alcohol?**
 - All outside alcohol needs to be communicated to Hotel Management and charged a corkage fee of \$20/ 750ml bottle (beer cases & wine). All events held in the lounge where liquor will be consumed require a licensed bartender to be present.
- **Can the Incline Lodge source specific alcohol/mixers for my event?**
 - With enough lead time (30 days) we are happy to assist in sourcing any preferred alcohol that we may not stock on a regular basis. The sourced alcohol will be added to the lounge rental payment structure.
- **Can we decorate the lounge for our event?**
 - Guests are welcome to decorate the lounge for their event. Please communicate all decor intentions to hotel staff prior to your event.
- **Does the Incline Lodge provide glassware, flatware, plates, linens, etc...**
 - The Incline Lodge has ample glassware, linens, and disposable plates/flatware for most events. Please communicate event goals/numbers to hotel staff prior to arrival to ensure feasibility.
- **Additional vendor requirements?**
 - Group leaders and vendors must coordinate with Hotel Management and announce all incoming vendors prior to arrival. All vendors are required to have General Liability Insurance, including any outside vendors such as hair & makeup artists or photographers. Recommended vendors already meet this requirement.
- **Does your lounge rental include the use of the pool?**
 - The Après Lounge & Bar and the Incline Lodge indoor pool are located on the same level and share the same main entrance door. The pool is available for use during events and is included with the lounge rental. No glassware is allowed inside the pool enclosure.

Wedding/Event Insurance

The Incline Lodge requires groups to have event cancellation insurance for your wedding block if you are staying with us in 2025. The goal is to protect everyone involved in case of extenuating circumstances such as extreme weather. Event insurance is affordable and convenient as we have partnered with Geico & Markel to offer discounted and approved policies directly to our groups:

EVENT LIABILITY INSURANCE - Required - if you host an event on Incline Lodge Property*

Markel event liability insurance helps protect you if someone causes property damage to the venue or someone is injured at your event. Here is our recommended selection:

- Liability Limit: \$1,000,000/\$1,000,000
- No to excluding host liquor if alcohol is being served
- Medical Payments Limit: \$5,000
- Yes to requiring waiver of subrogation – please list “Shanti Rahm, LLC dba The Incline Lodge”

Event Liability Insurance will cover the Wedding Block for events hosted on our property as well as damage that may occur during your guests stay (in rooms & during events). If you are planning to host a private event with us in the Après Lounge & Bar, we require this insurance. If you are just using the Incline Lodge for your room block, the insurance is optional and at the discretion of your group leader.

EVENT CANCELLATION INSURANCE - Required - for all wedding room blocks*

Markel event cancellation insurance reimburses you for lost deposits and non-refundable amounts if you have to cancel or postpone your event due to unforeseen circumstances, such as:

- Vendor bankruptcy
- Extreme weather
- Military deployment
- Accident/illness of the event host or immediate family member

The goal of Event Cancellation Insurance is to protect both the Bride & Groom as well as the Hotel in case of extreme circumstances. For example, with the increased risk of wildfires the Incline Lodge wants all guests to be covered in the case of unforeseen cancellations due to uncontrollable factors.

Please feel free to reach out with any questions and our team would be happy to assist.



Recommended Venue Locations?

If you are looking for recommended wedding venues in the Tahoe area let us know for our list of local favorites!



THE INCLINE LODGE